

PHASE ANGLE ELECTRONIC HEAT SWITCH UP TO 15A

QLC

X10206

INTRODUCTION

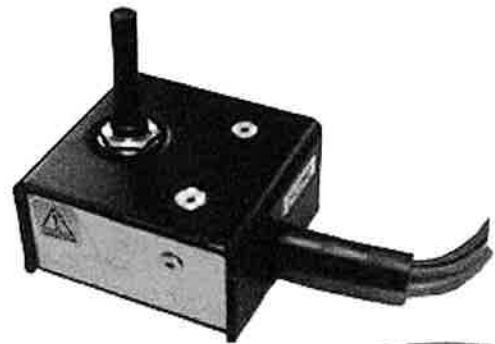
The switchable phase-angle power regulator is a robust and compact unit, ideal for controlling single-phase mains-driven loads. The standard QLC units are for 230V supply, with a three position and off control switch. The large triac enables the unit to handle high in-rush currents with ample safety margin on industrial installations.

APPLICATIONS

This unit is suitable for quartz lamps and conventional resistive-heating elements in series or parallel configurations. Applications include: ovens, moulders, dryers and some inductive loads (e.g. transformers and motors).

FEATURES

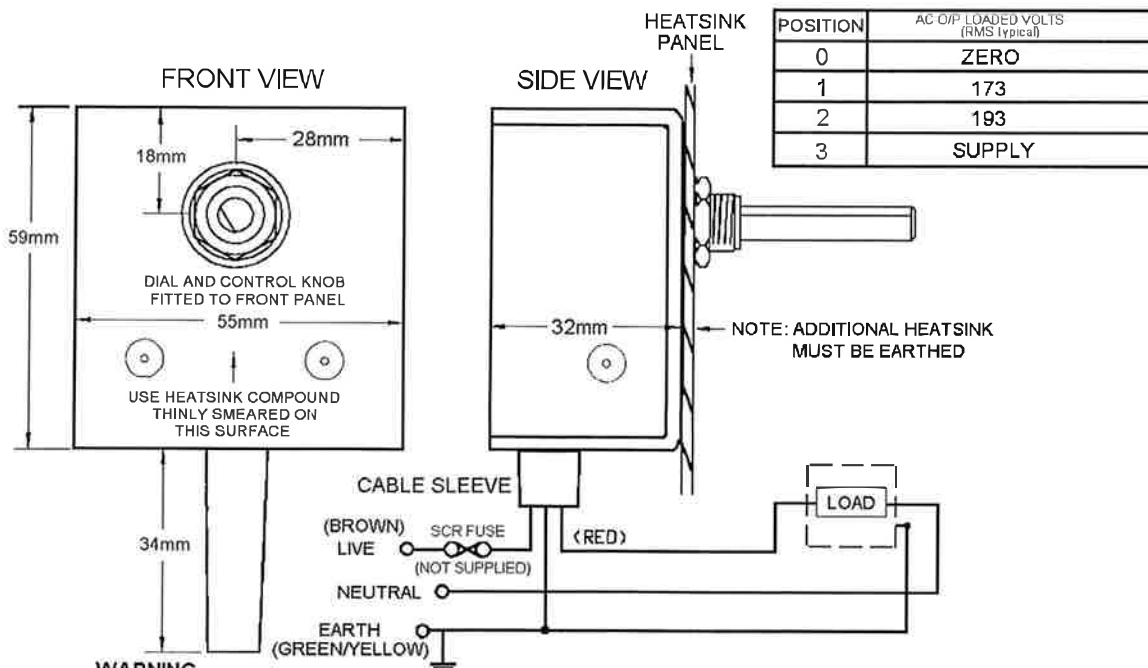
- Large triac for inrush protection.
- Three position and off control.
- Single-hole fixing.
- Rugged and compact.



RoHS Compliant

INSTALLATION

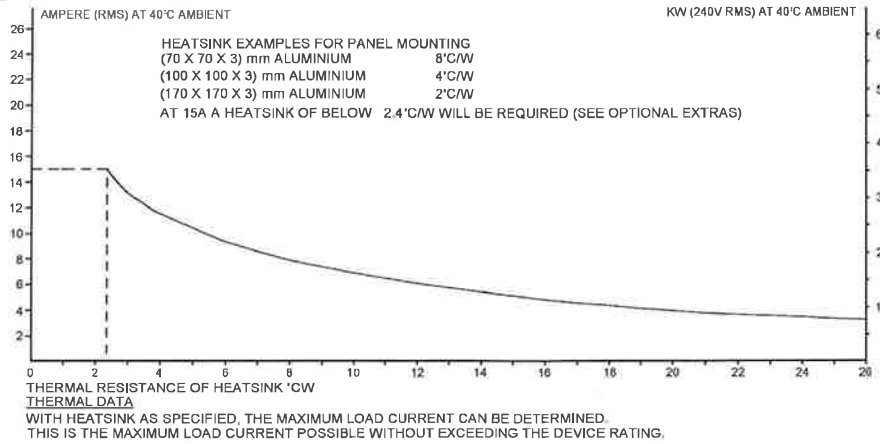
CONNECTIONS AND DIMENSIONS



WARNING

LIVE TERMINALS - SWITCH OFF SUPPLY BEFORE COMMENCING ANY SERVICE WORK.
FOR HEATSINK PANEL MOUNTING
A 10mm HOLE IS REQUIRED TO ACCEPT MOUNTING BUSH.
USE HEATSINK COMPOUND FOR EFFECTIVE THERMAL COUPLING.

INSTALLATION



SPECIFICATIONS

Triac limiting rms on state current	26A	Isolation voltage	2500V rms
Unit limiting rms on state current	15A	I ² t limiting value for fusing	112A ² s
Peak single cycle surge @ 10mS	320A	Mains supply (within 10%)	230V ac @ 50/60 Hz
Max load at 20°C ambient (without extra heatsink)	10A min	operating current	200mA
Max unit operating temperature	65°C	Unit storage temperature range	-20 to +85°C

FURTHER DIMENSIONS

Shaft diameter	6.3mm	Shaft projection from bush	30mm
Bush length	5mm	Standard cable length	400mm

FUSING

It is recommended to use semiconductor (fast-acting) type fuses or circuit breakers (semiconductor-MCB) for protection. On initial use some loads may need an increased factor of safety for unit and/or device protection (see SRA datasheet for further information).

CE MARKING

This family carries a "CE" marking. These phase angle controllers need a suitable remote filter. For more information see recommendations section and contact our sales desk. (See Declaration of Conformity)

RECOMMENDATIONS

Other documents are available on request, which may be appropriate for your application: -

CODE	IDENTITY	DESCRIPTION
X10229	RFI	Single-phase filtering recommendations - addressing EMC Directive
X10213	ITA	Interaction, uses for phase angle and for burst fire control.
X10255	SRA	Safety requirements - addressing the Low Voltage Directive (LVD) including: - thermal data/cooling; live parts warning and earth requirements; fusing recommendations.
P01.1	COS	UAL Conditions of sale.

NOTE: It is recommended that installation and maintenance of this equipment should be done with reference to the current edition of the I.E.T. (formerly I.E.E.) regulations (BS7671) by suitably qualified/trained personnel. The regulations contain important requirements regarding installation and safety of electrical equipment. Specific installers should refer to local and national regulations.

ORDER CODE:

State part number: QLC 230V AC

Optional extras include: heatsink paste, filter.

Note: When ordering a filter the maximum current the QLC is to be used at will be required



UNITED AUTOMATION LIMITED

Southport Business Park
 Wight Moss Way
 Southport, PR8 4HQ
 ENGLAND

Tel: 0044 (0) 1704 – 516500
 Fax: 0044 (0) 1704 – 516501
 enquiries@united-automation.com
www.united-automation.com

Page No. 2 of 2 Issue 3 Date 31/07/12

